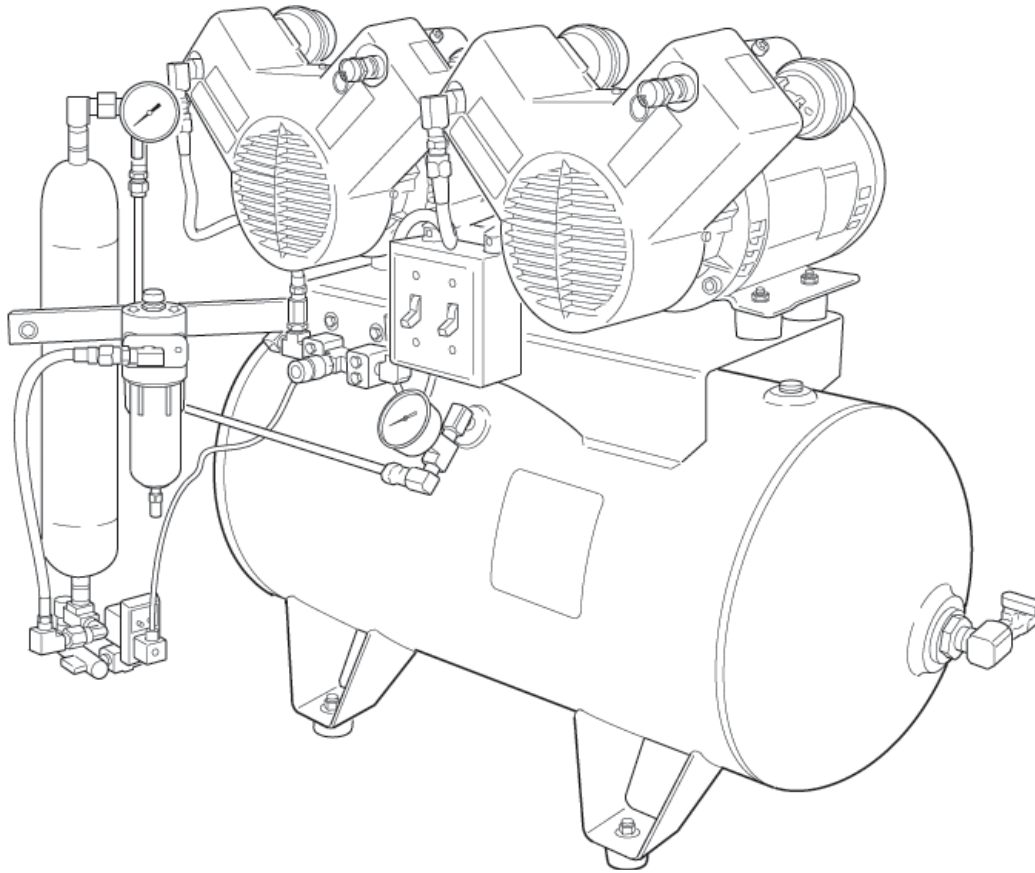


Compressor Installation Guide

C Series COMPRESSOR

- C1103
- C1203
- C2106
- C2206
- C3210



DCI

C - Series

Compressor

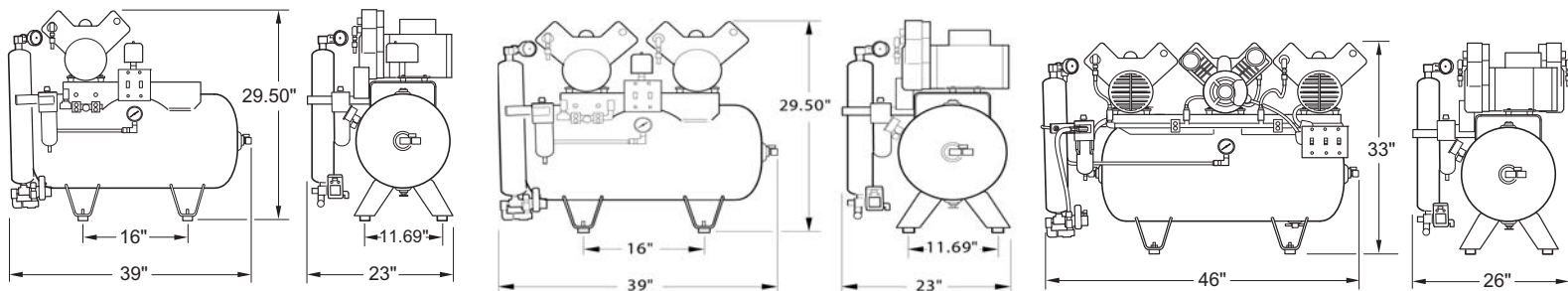
Oil-Less # Heads Tank Power Power

Model #	# of Heads	Tank Size	Voltage	Breaker Size	Amps
C1103	1	Horizontal 20 gal.	115	20 Amps	13.4
C1203	1	Horizontal 20 gal.	230V	20 Amps	6.7
C2106	2	Horizontal 20 gal.	115V	30 Amps	26.8
C2206	2	Horizontal 20 gal.	230V	20 Amps	13.4
C3210	3	Horizontal 30 gal.	230V	30 Amps	20.1

All Voltage Ratings \pm 5%.

NOTE: 1) All machines are of the 3 wire grounded system type.

2) Minimum Breaker size 30 amp & larger wire size #10 supply connection.



Space Requirements



NOTE: Installation of this product should be undertaken only by qualified service technicians.

This product has been factory-tested prior to shipment.

If the product does not function as described in the start-up and test procedures in this manual, call the number below for assistance.

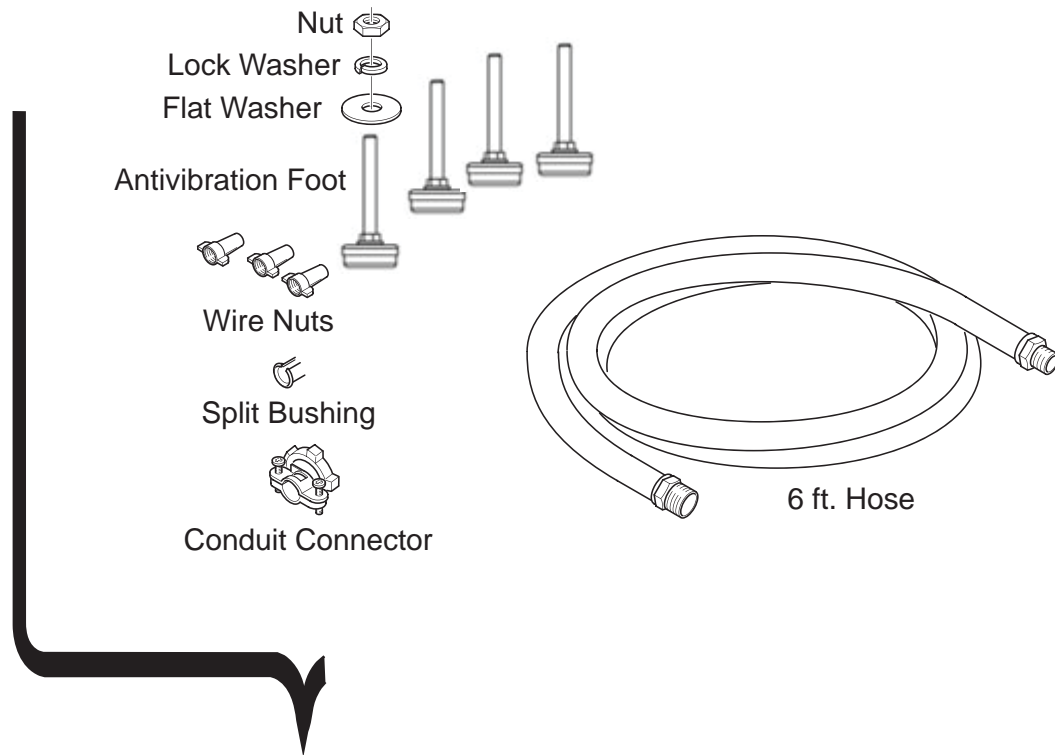
Technical Support: 1-800-624-2793

NOTE: Air flow rates in excess of compressor ratings will result in reduced performance and possible overheating.



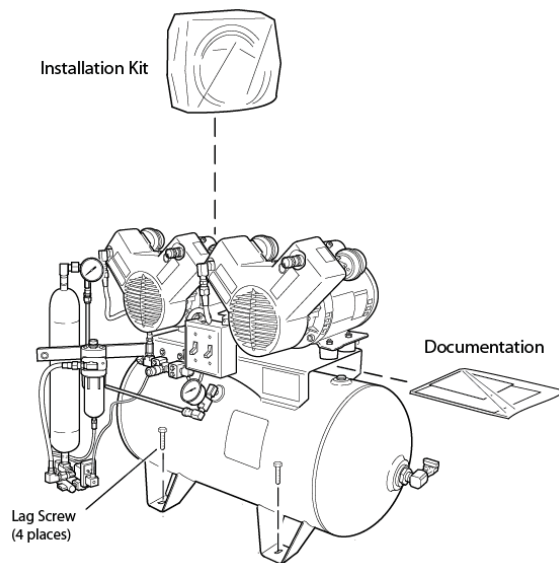
Installation Kit

The C - Series is shipped with the following:



You must provide:

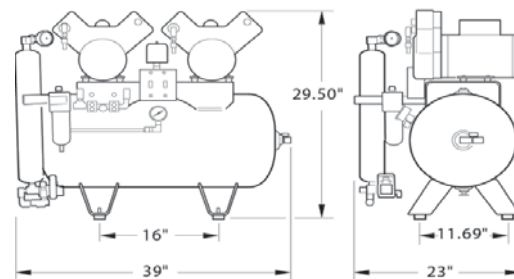
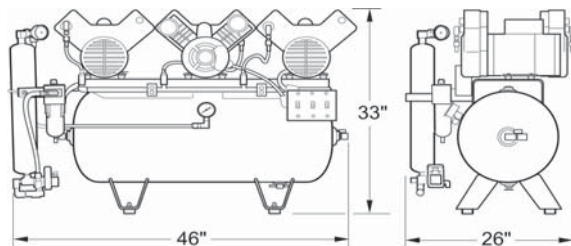
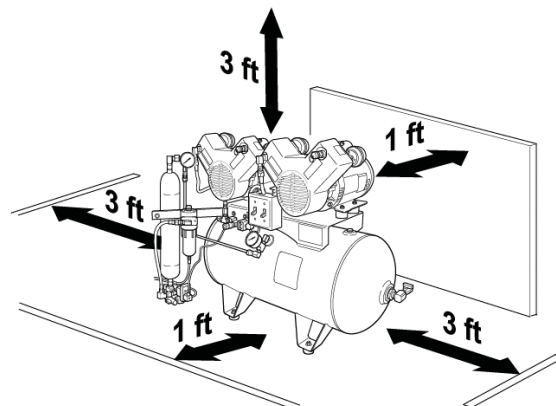
- Fittings and bushings as required to connect the flexible hose to the on-site piping (the hose-end is 3/8 in. NPT “male”).
- Earthquake restraints for securing the equipment if required by local codes.



Site Requirements

Clearance

- Adequate clearance as shown below for servicing and air circulation — room temperature should be maintained between 40°F and 100°F when the motors are running.
- A flat, level floor that provides stable support.
- Protection from the weather and direct sunlight.
- A power source within 3 ft. of back-center that provides a dedicated, breaker-protected circuit.



WARNING! Fire Hazard! Running motors generate heat. Do not store flammable liquids or objects such as clothing, mops, or brooms near or above the unit.

PLUMBING REQUIREMENTS

1. 1/2 in I.D. minimum pipe size.
2. Pipe connection is to be located within 3 ft of center back of compressor.
3. Install per all Local and State plumbing codes.

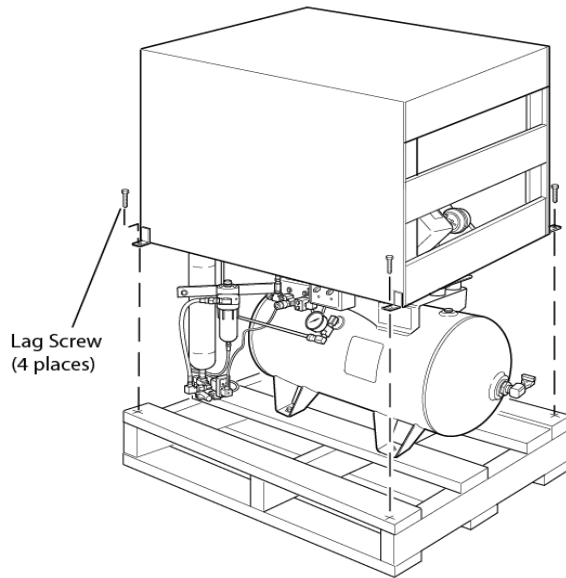
ELECTRICAL REQUIREMENTS

1. 3 wire single phase 115 vac or 230 vac. All voltage ratings $\pm 5\%$.
2. Green Wire is to be grounded to a suitable system ground.
3. Power supply must be on a dedicated circuit.
4. See data tag for appropriate breaker size.
5. Power supply connection is to be located within 3 ft of center back of compressor.
6. Install per all local and State electrical codes.

Unpacking

Step One:

Unbolt the crate from the pallet and remove crate intact.



NOTE: Returns must be in the original packaging. Retain the packaging until installation and test are complete.

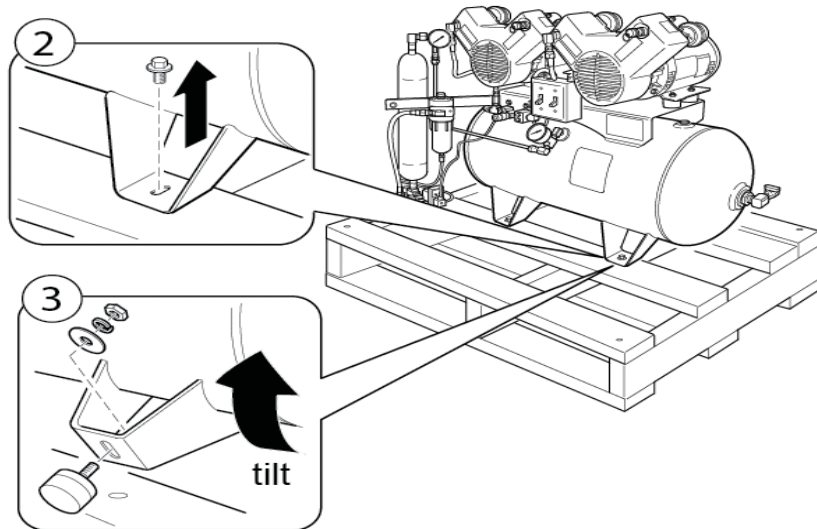


Step Two:

Remove the four bolts that secure the C - Series to the pallet and put them with the other packaging.

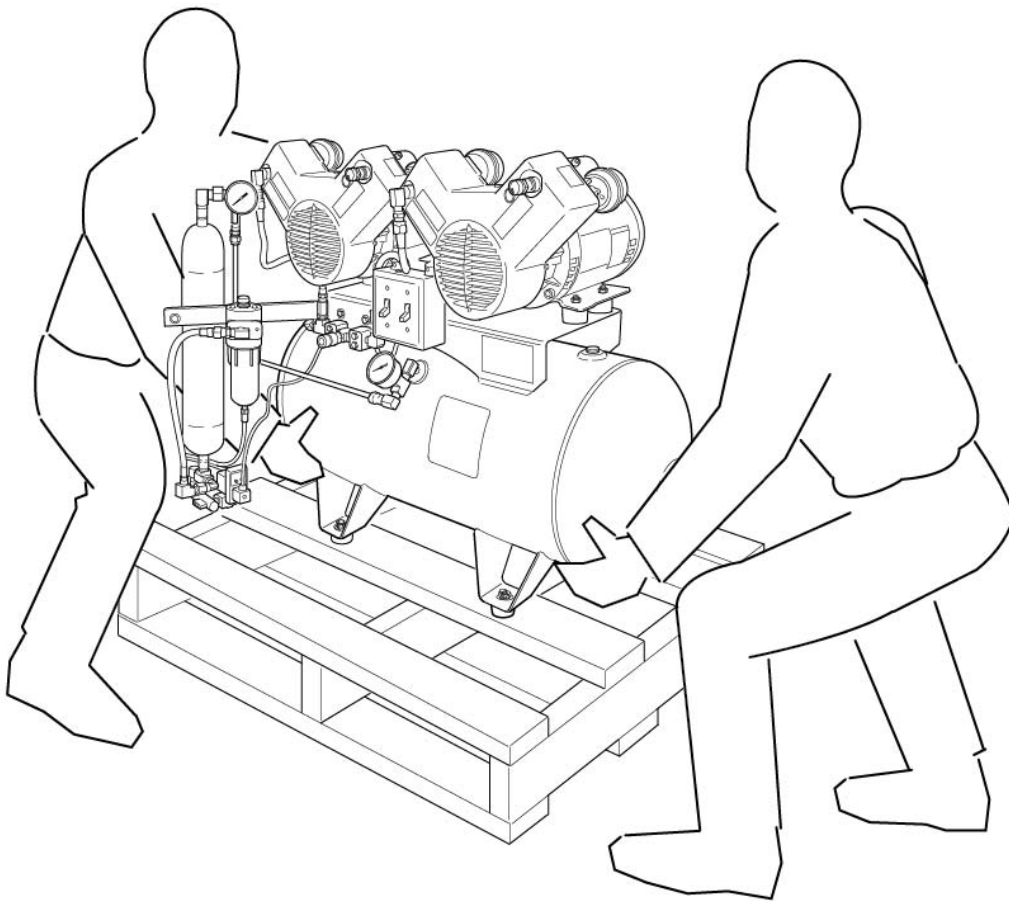
Step Three:

Mount the four rubber feet.



Step Four:

Grasp the C - Series by the tank and
move it into position.



! **NOTE:** Returns must be in the original packaging. Retain the packaging until installation and test are complete.

Installation

Electrical

Step One:

Make sure the power supply is turned off and matches the voltage rating of the motors.

Note: Appropriate Breaker size is listed on the machine data tag.

Step Two:

Connect the power, making sure to adhere to all local and state codes.

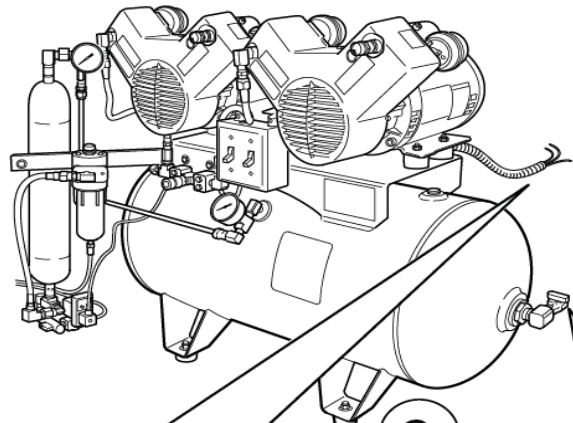
Connect the "Green" Ground wire to an earth ground.

Note: 3 wire system.

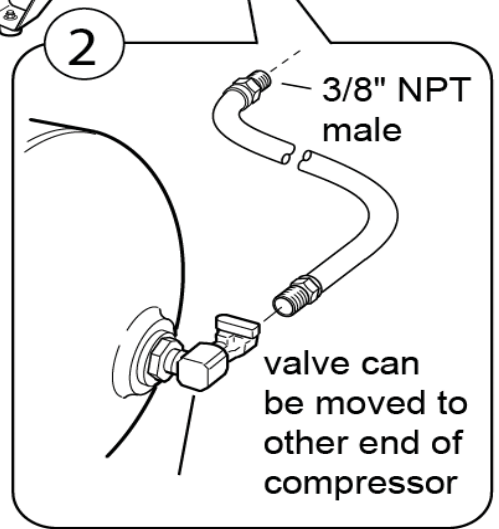
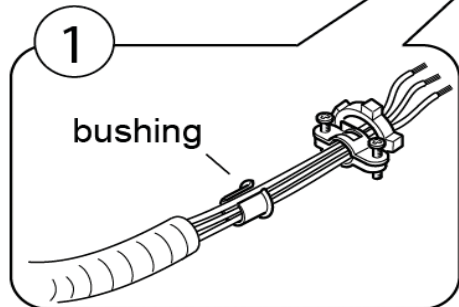
Step Three:

Attach the flexible piping and connect to on-site piping.

Note: Install appropriate over current protection; i.e., circuit breaker.



Model #	Breaker Size
C 1103	20 Amps
C 1203	20 Amps
C 2106	30 Amps
C 2206	20 Amps
C 3210	30 Amps



WARNING! Do not connect rigid pipe directly to the compressor. Motor vibration loosens fittings, causing leaks. Use the flexible pipe provided or a similar substitute.



Step One:

Turn off the switches on the front of the compressor.

Step Two:

Ensure that the dryer by-pass shut-off valve is open.

Step Three:

Ensure that strainer shut-off valve is open.

Step Four:

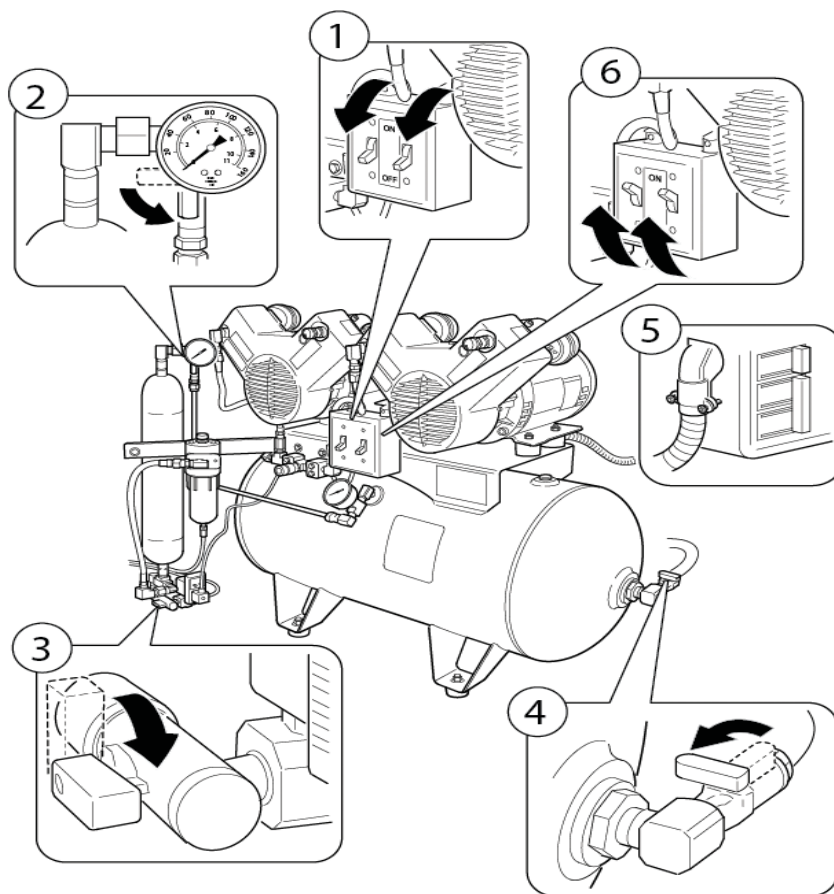
Close outlet valve on the compressor tank.

Step Five:

Apply power to system — the purge valve may emit a hissing sound as the purge timer resets.

Step Six:

Switch on the motors. If you hear the popping sound of air escaping the relief valve, the dryer by-pass valve is closed.



Start-Up & Test

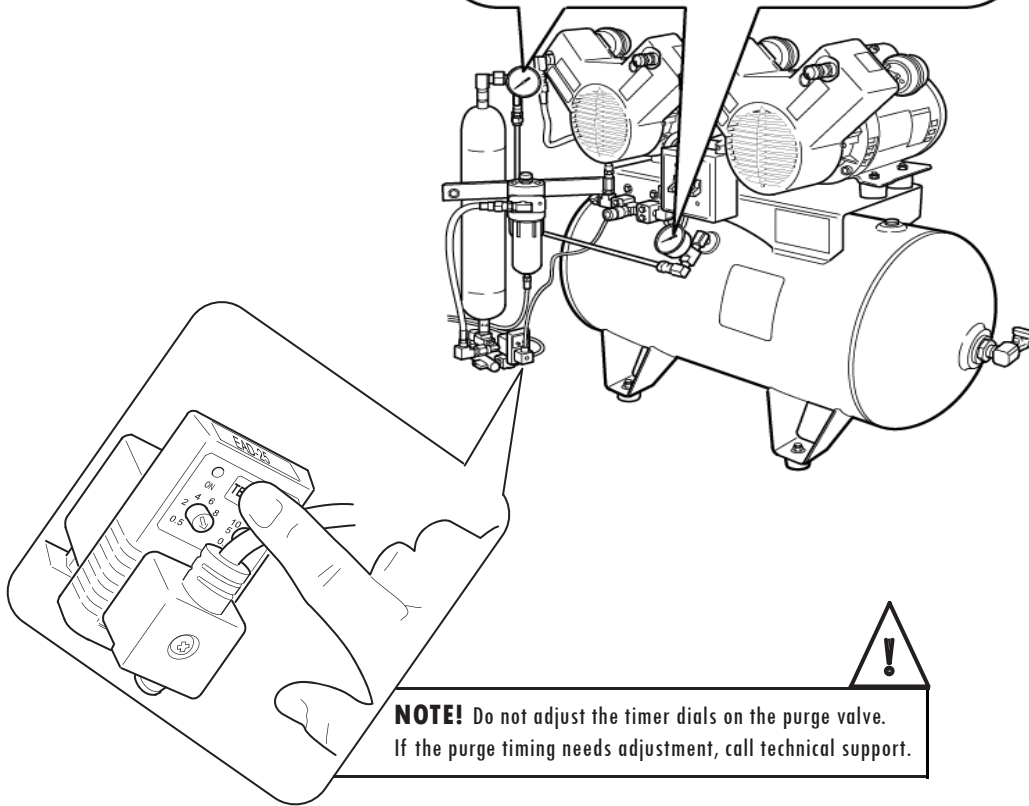
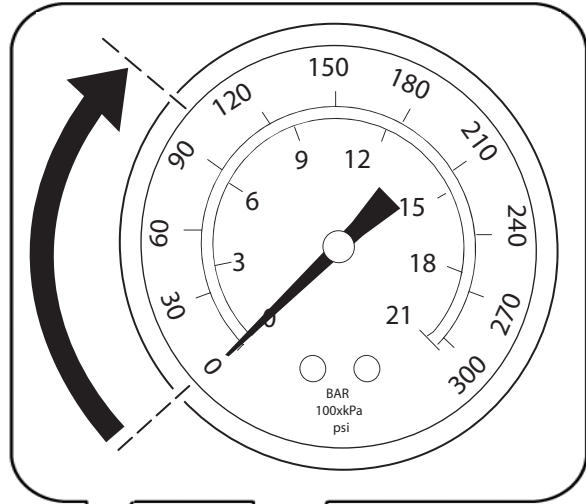
Step Seven:

As the tank pressurizes, watch the pressure gauge. If the pressure switch is functioning normally, the motors will shut off at approximately 100 PSI.

Wait five minutes and watch the gauge to ensure there are no leaks in the C Series. The system should lose no more than one PSI per minute.

Step Eight:

Test the purge valve by pressing the TEST button. If the valve is functioning normally, you will hear the hiss of air escaping for approximately ten seconds.

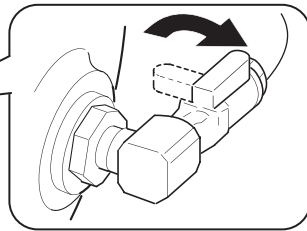
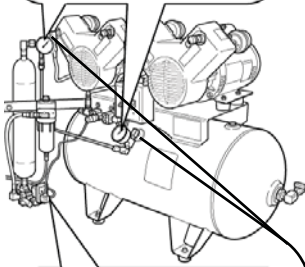
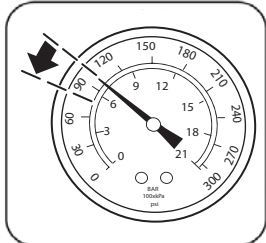


Step Nine:

Release air using the purge-valve TEST button and watch the pressure gauge to see when the motors start.

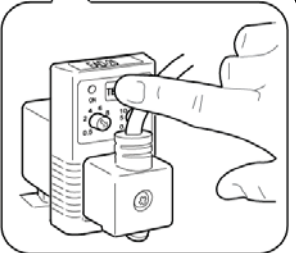
The motors should start when the pressure drops to approximately 80 PSI.

You may have to push the TEST button several times before enough air is released to lower the pressure to 80 PSI.



Step Ten:

Open the outlet valve on the tank to pressurize the piping and wait until the tank is fully pressurized and the motors stop running.

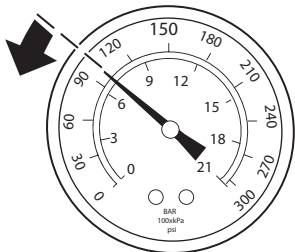


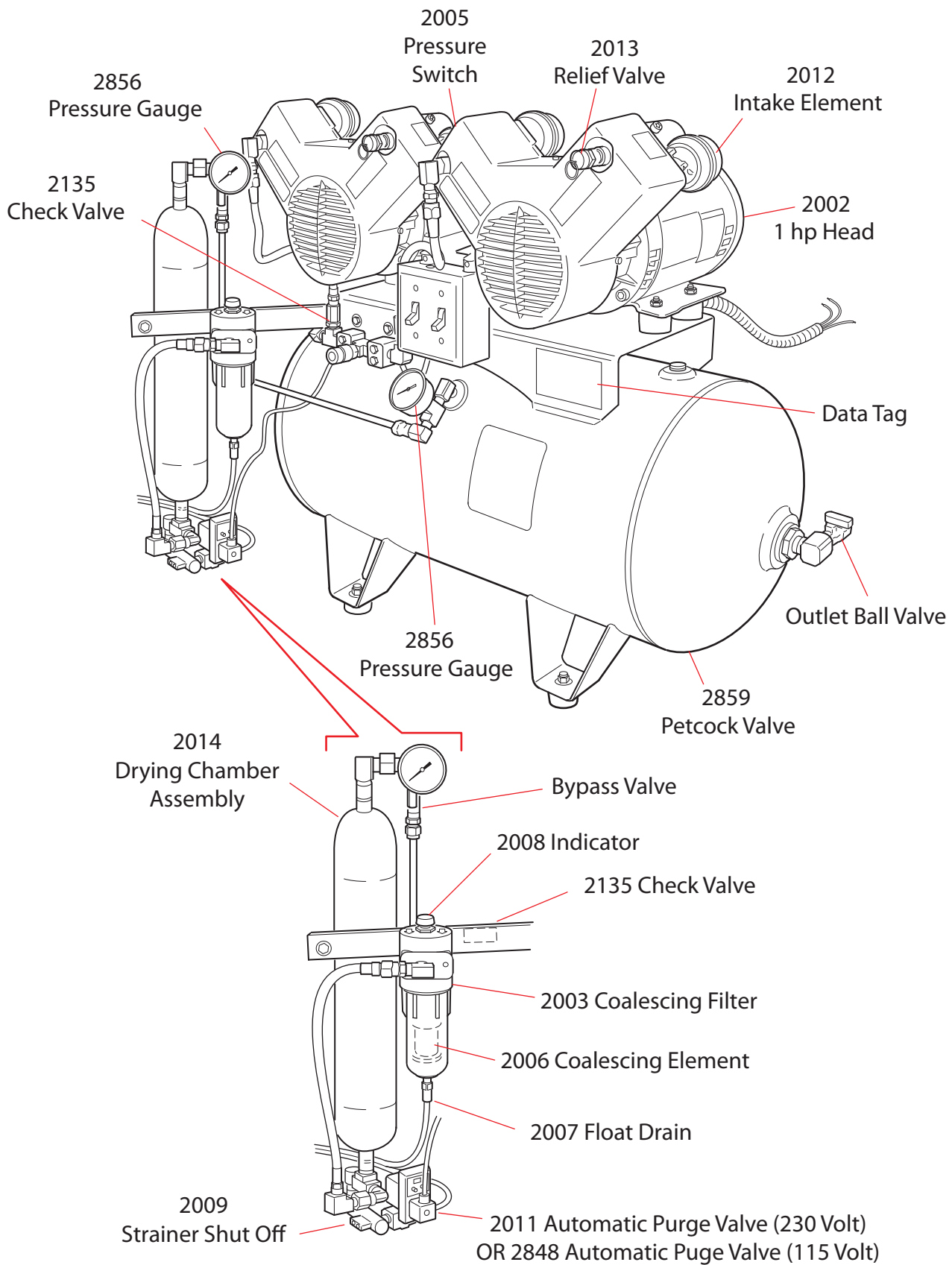
Step Eleven:

Ensure that no equipment is drawing pressure from the tank. When no equipment is drawing on the tank, pressure should drop no more than 1 PSI per minute.

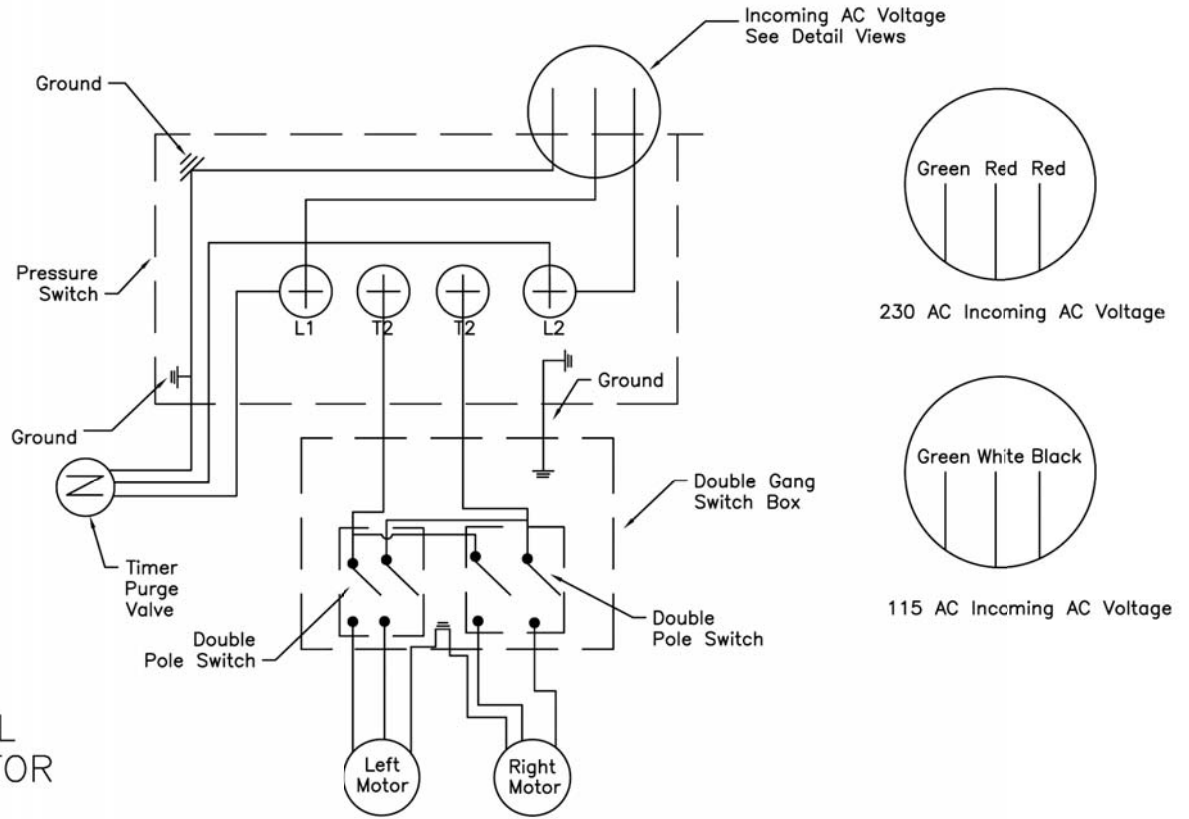
Watch the pressure gauge. If pressure drops faster than 1 PSI per minute, an air leak is indicated somewhere in the system. Repair as necessary.

Loses less than 1 psi per min?
NO LEAKS!

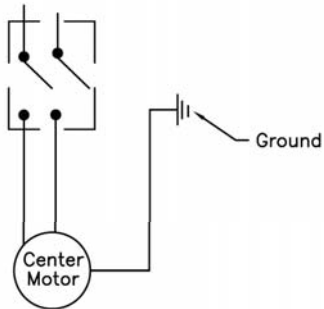




Electrical Schematic

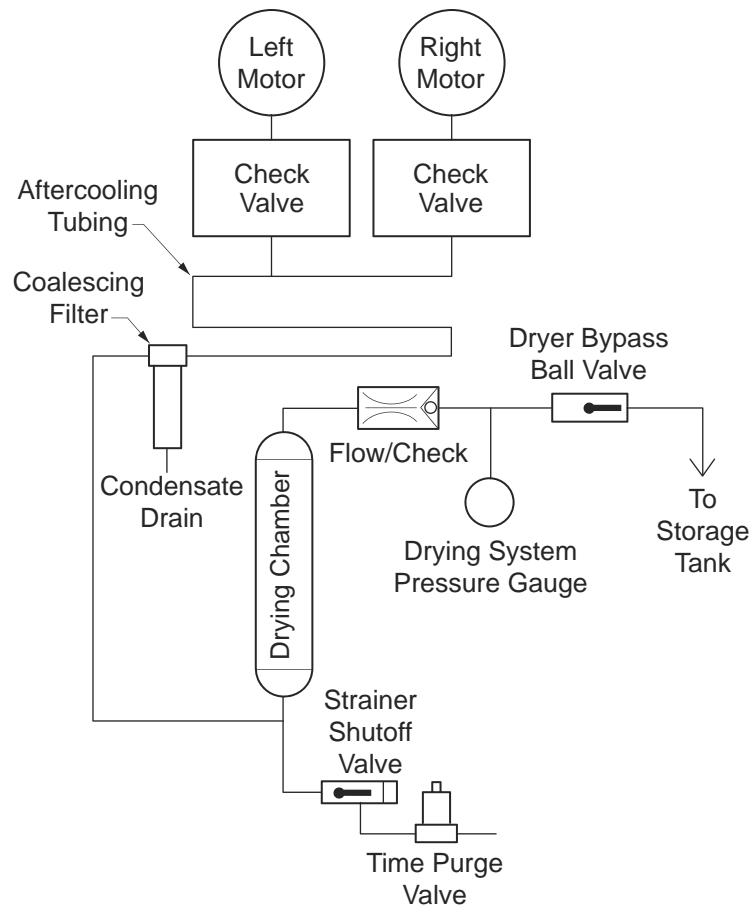


TRIPLE HEAD
HAS ADDITIONAL
SWITCH & MOTOR



ALL SINGLE & DUAL
HEAD COMPRESSORS

Plumbing Schematic





**305 N. Springbrook Road
Newberg, Oregon 97132 USA**

**503.538.8343
800.624.2793**

www.dcionline.com