

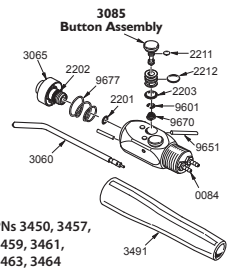
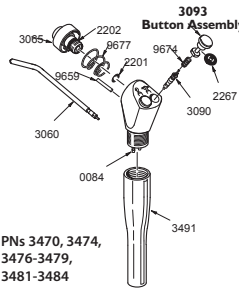
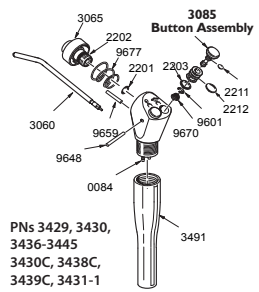
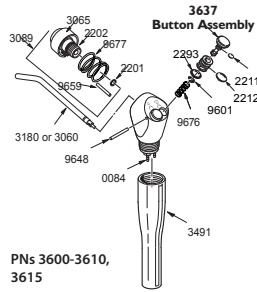
PRECISION COMFORT, QUICK-CLEAN STANDARD, VALVE CORE AND CONTINENTAL SYRINGE

DCI

ENGLISH

Syringe Parts

#0084	8-32 Barb & Washer	(Pkg. 10)
#2201	O-Ring	(Pkg. 12)
#2202	O-Ring	(Pkg. 12)
#2203	O-Ring	(Pkg. 12)
#2211	O-Ring	(Pkg. 12)
#2212	O-Ring	(Pkg. 12)
#2267	O-Ring	(Pkg. 12)
#2293	O-Ring	(Pkg. 12)
#3060	Syringe Tip	(1 ea.)
#3180	Syringe Tip Indexing	(1 ea.)
#3061	Syringe Tip	(Pkg. 5)
#3181	Syringe Tip Indexing	(Pkg. 5)
#3059	Syringe Tip	(Pkg. 50)
#3182	Syringe Tip Index	(Pkg. 50)
#3065	Tip Adapter Assembly	
#3085	Button Valve Assembly	
#3093	Button Assembly, QC Syringe	
#3637	Button Valve Assembly	
#3090	Valve Core	(Pkg. 10)
#3491	Handle, Quick-Clean Syringe	
#9601	Retaining Ring	
#9648	Pin, Quick-Clean Syringe Button	
#9651	Pin, Continental Syringe Button	
#9676	Spring, Syringe Button	
#9677	Spring, Tip Adapter	



INSTALLATION

Turn off the air and water supplies. Determine which of the syringe tubes leads to the air button, and connect that tube to the air outlet on the dental unit or syringe manifold. Connect the other tube to the water outlet. For circulating syringes, the third tube is the return water, and is routed to the drain. Recommended operating pressures: Air 80 psi, Water 40 psi.



TIP STERILIZATION

Clean tips under running water for 30 seconds with a soft brush and place in an ultrasonic bath with an enzymatic cleaner to remove superficial debris prior to sterilization; any debris may reduce the effectiveness of the sterilization. Sterilization process is by steam autoclave. Parameters for wrapped are 132°C (270°F) for 15 minutes at temperature with a 30 minute drying time when using a gravity displacement autoclave. Parameters for unwrapped are 132°C (270°F) for 3 minutes at temperature when using a gravity displacement autoclave.

CHANGING THE TIP

A sterile syringe tip should be installed for each patient. To prevent contamination, sterile tips should be handled with a sterile gauze pad. To remove the syringe tip, press down on the large collar. When you feel a soft "click", the tip may be pulled straight out. Hold the collar down and insert the new tip. Be sure to press it all the way in, and then release the collar. Test the installation by giving a firm pull on the tip to assure that it is inserted all the way, and that the locking mechanism is fully engaged.

