

DCI EXPANDS OFFERING OF PARTS to fit A-dec Equipment!

NEW Parts!

Everything you need to
repair or replace an A-dec
Foot Switch

PN 9588 FOOT SWITCH ASSEMBLY TO FIT A-dec CHAIRS



- Dark Surf Color
- Cable included
- OEM #62.0163.01
- (Not compatible with Priority 1005)

PN 9589 FOOT SWITCH REPLACEMENT COVER TO FIT A-dec CHAIRS



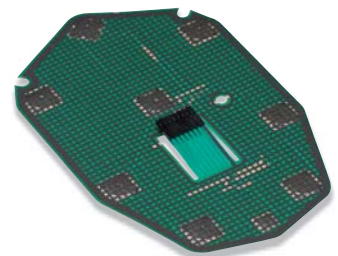
- Dark Surf Color
- Includes 6 replacement 10-32 screws
- A-dec #61.3049.00

PN 9587 CABLE ASSEMBLY TO FIT A-dec FOOT SWITCH



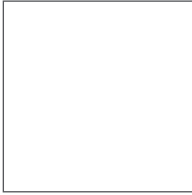
- Fits on A-dec Performer, 1021, 1040, 311 & 511 Series Chairs
- A-dec #62.0186.00, #62.0186.01, #61.2108.00

PN 2943 MEMBRANE, TO FIT A-dec CHAIR FOOT SWITCH



- A-dec #61.3048.00

DCI



Call us or visit our website today!

1-800-624-2793 | www.dcionline.com

NEW!

Text your questions to 503-376-8440

DCI NOW OFFERS EVERYTHING YOU NEED TO REPAIR A-dec LIGHTS!



PN 9390 LIGHT SHIELD TO FIT A-dec 500/6300 HALOGEN LIGHTS



- Fits all A-dec 6300 and 500 halogen dental lights
- Optical coating for easy cleaning and scratch resistance
- A-dec #28.0503.01

PN 9391 NOSEPIECE TO FIT A-dec 6300 LIGHT SHIELD



- Kit includes heat shield, spacers, nose piece and fasteners
- Used to install onto DCI PN 9390

PN 9392 LIGHT SHIELD MOUNT ASSEMBLY W/ HEAT SHIELD TO FIT A-dec 6300 LIGHTS



- Assembly includes Nose piece & Light Shield
- A-dec #28.0503.01

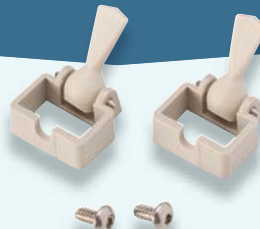
Replacement Bulbs, Reflectors, Light Shield Brackets, Light Cables, Switches & Sockets!



PN 9364



PN 8938



PN 8619



PN 9583



PN 8114

These parts are manufactured by DCI to fit A-dec equipment. DCI has no affiliation with A-dec Inc. DCI replacement parts are not manufactured under license or supervision of A-dec.